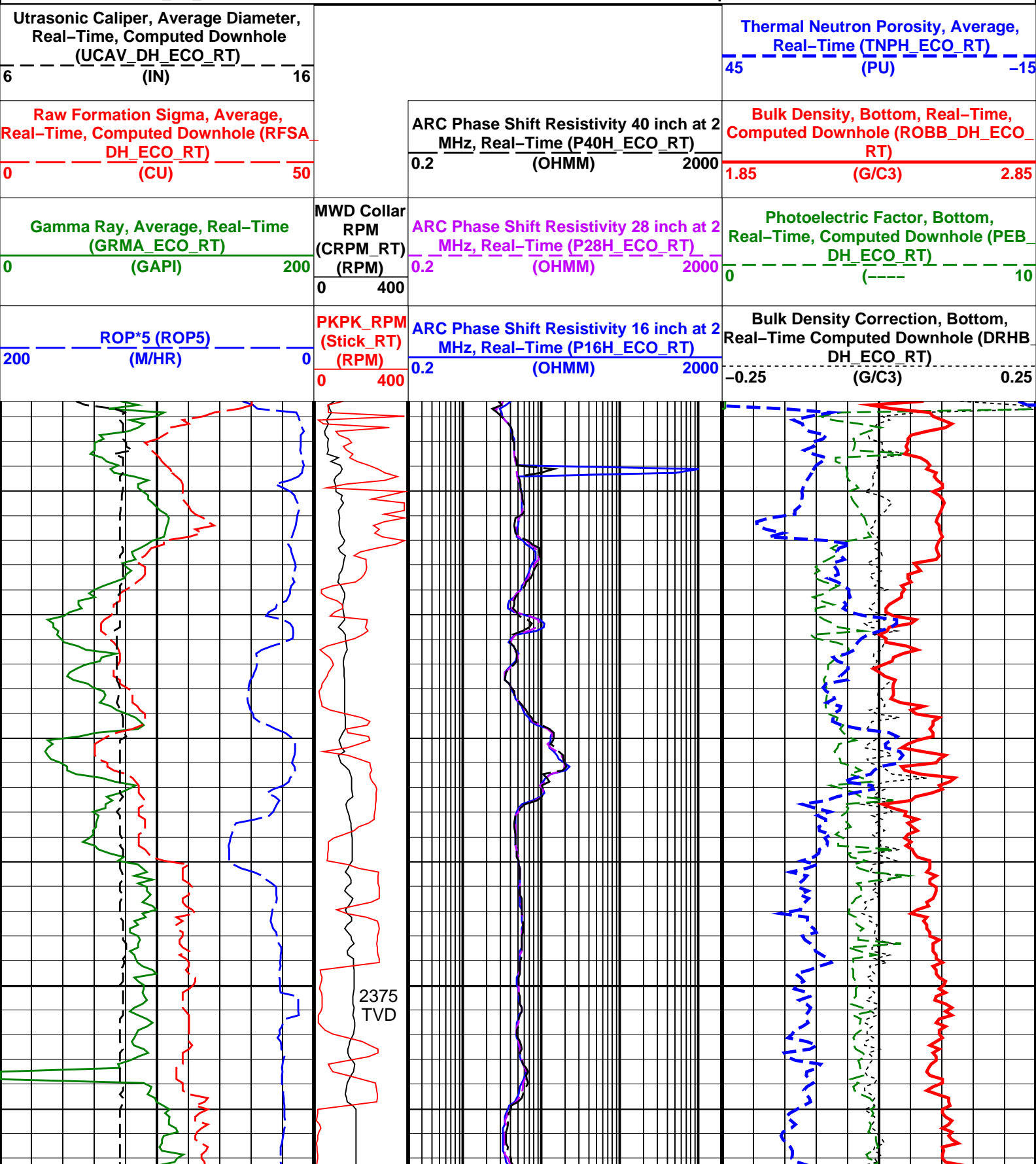
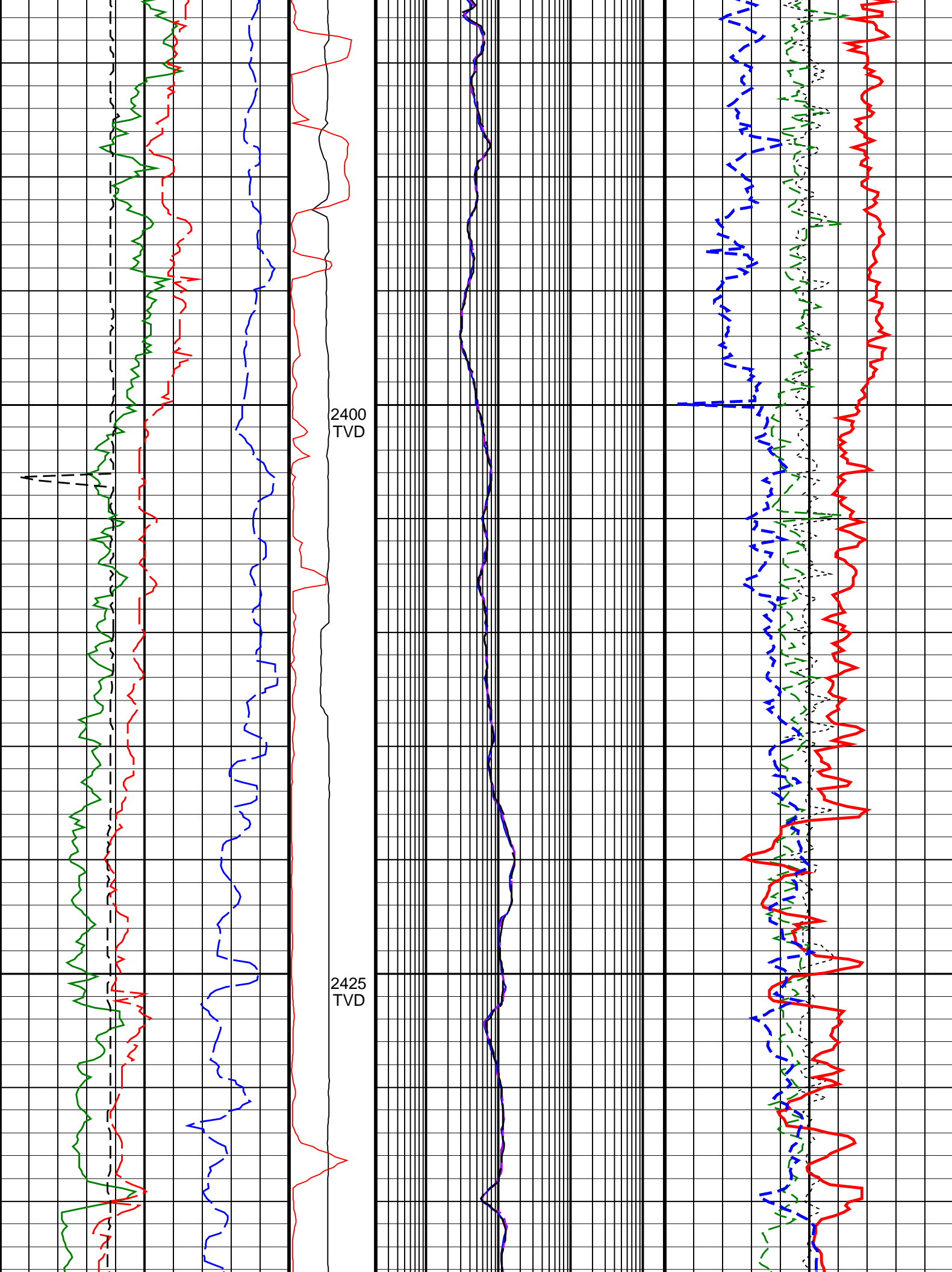


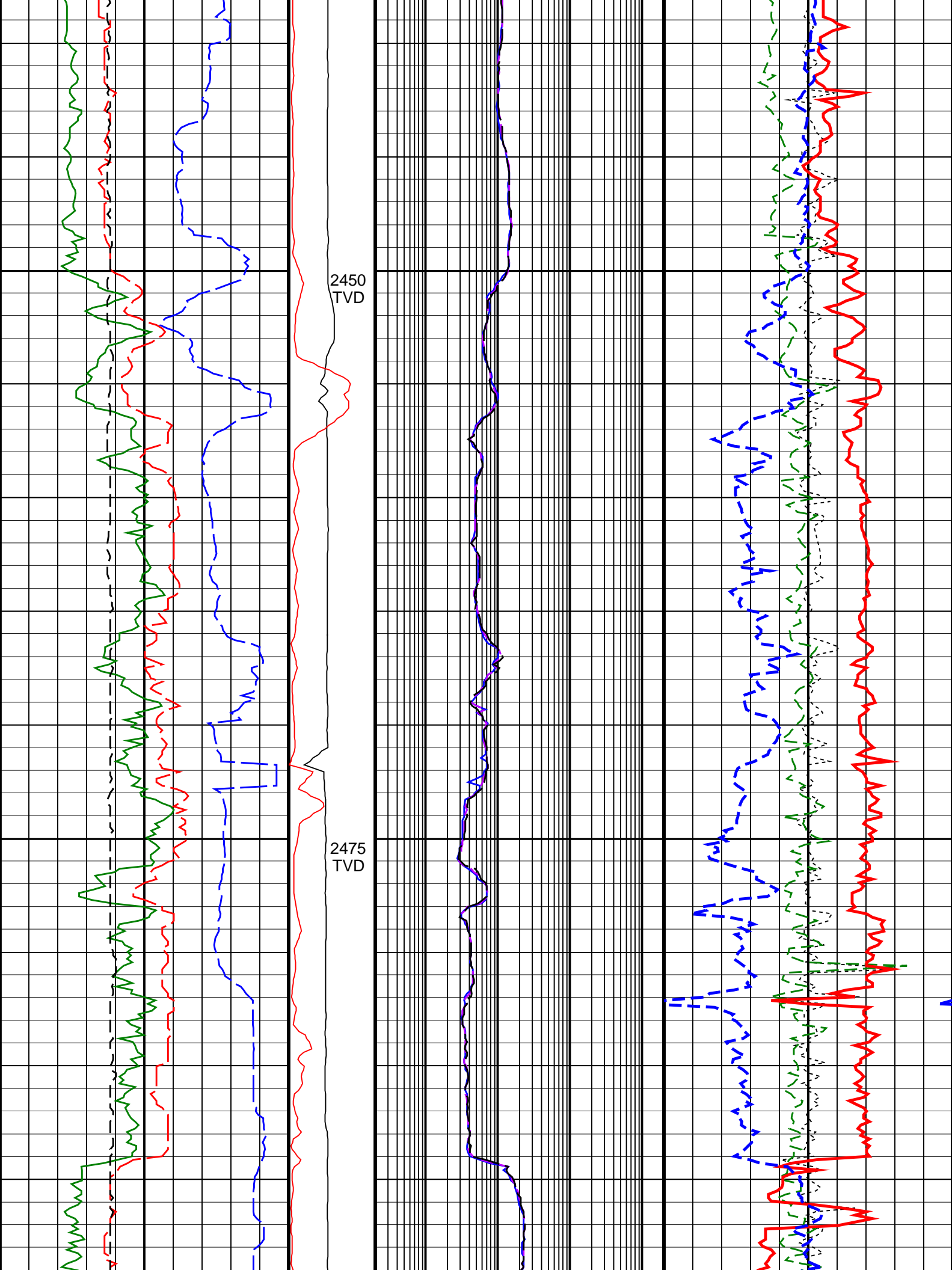
Longtom-4 P LWD RT 200TVD

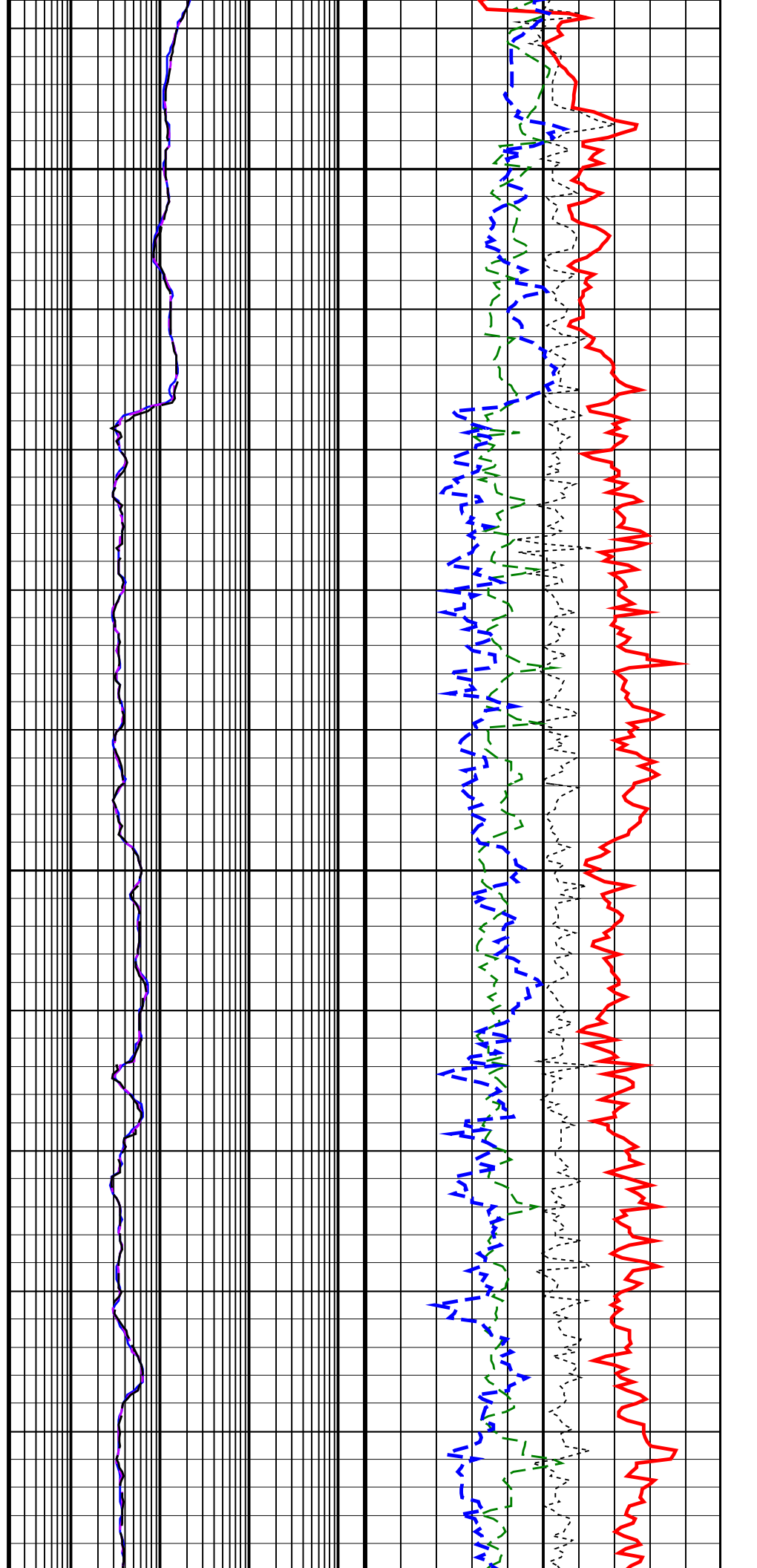
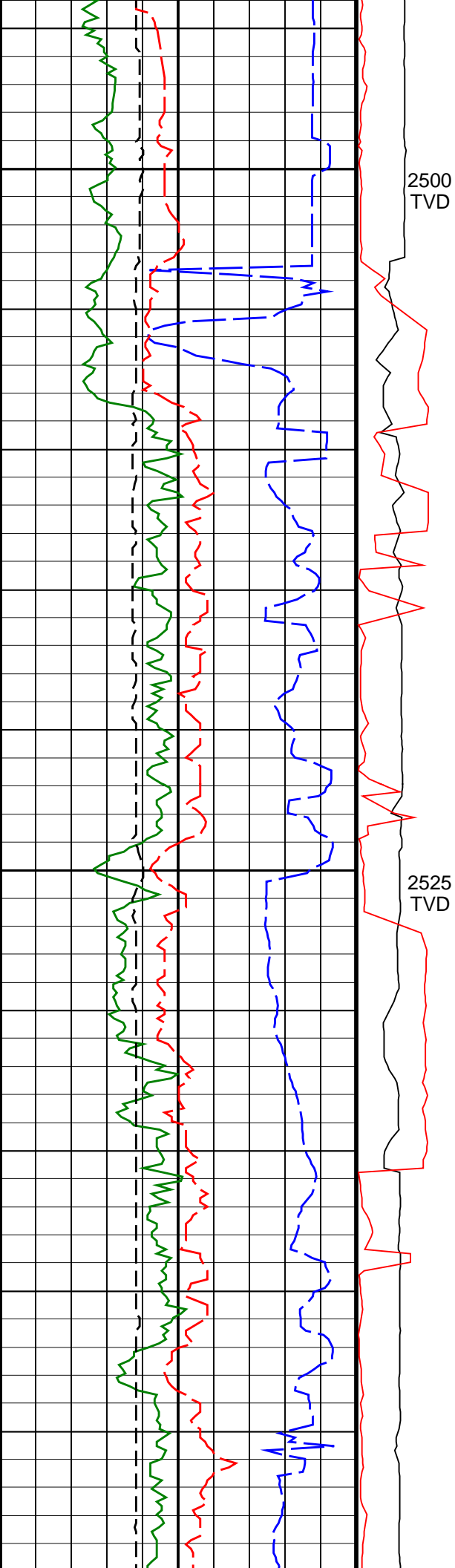
IDEAL Version: ID13 0C 08 <TVD> Vertical Scale: 1:200

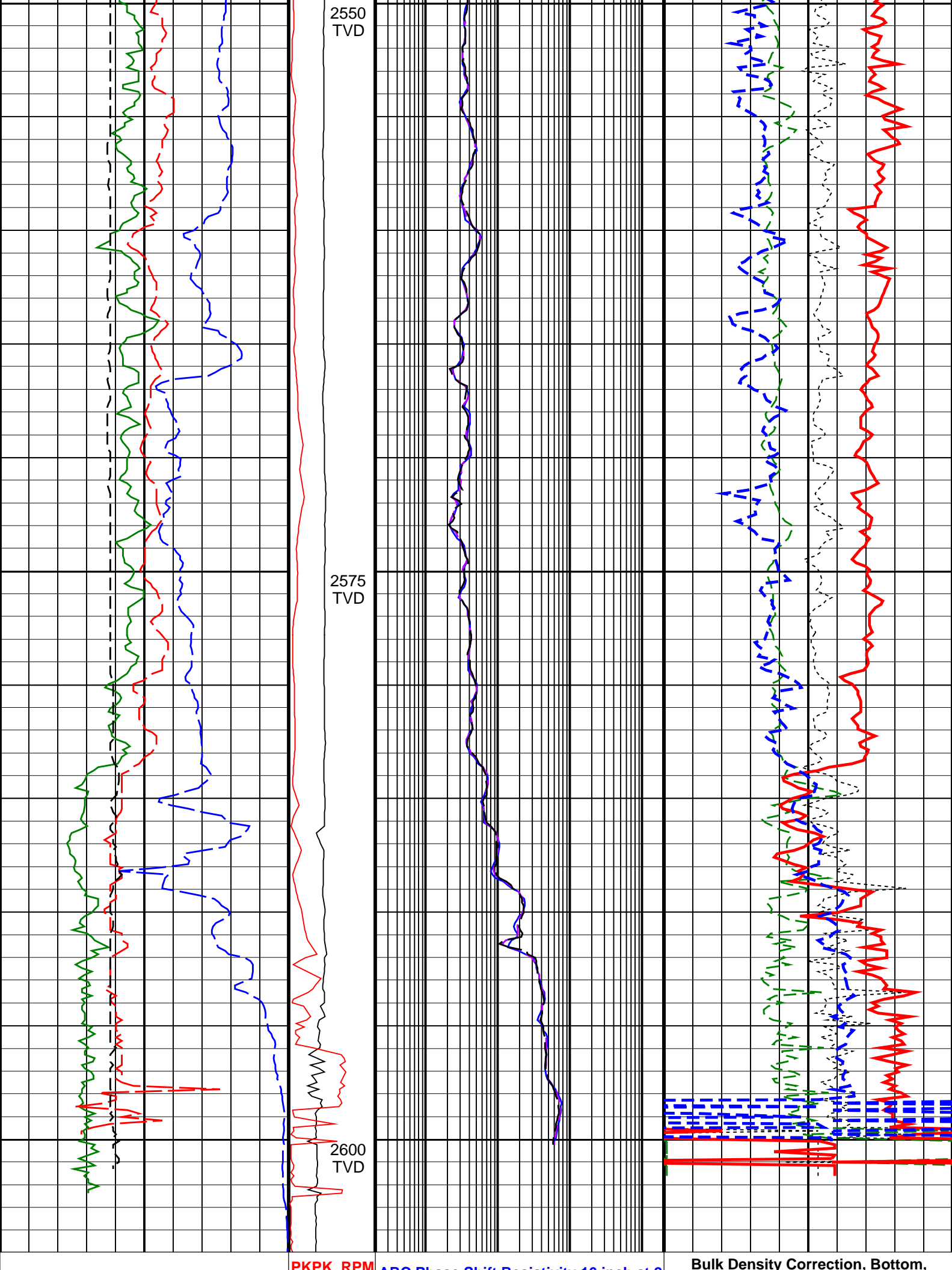
Graphics File Created: 29-Jul-2008 01:25











<div> <div>ROP*5 (ROP5)</div> <div>200 (M/HR)0</div> </div>	<div> <div>(Stick_RT)</div> <div>(RPM)</div> <div>0400</div> </div>	<div> <div>ARC Phase Shift Resistivity 16 inch at 2</div> <div>MHz, Real-Time (P16H_ECO_RT)</div> <div>0.2 (OHMM)2000</div> </div>	<div> <div>Real-Time Computed Downhole (DRHB_</div> <div>DH_ECO_RT)</div> <div>-0.25 (G/C3)0.25</div> </div>
<div> <div>Gamma Ray, Average, Real-Time</div> <div>(GRMA_ECO_RT)</div> <div>0 (GAPI)200</div> </div>	<div> <div>MWD Collar</div> <div>RPM</div> <div>(CRPM_RT)</div> <div>(RPM)</div> <div>0400</div> </div>	<div> <div>ARC Phase Shift Resistivity 28 inch at 2</div> <div>MHz, Real-Time (P28H_ECO_RT)</div> <div>0.2 (OHMM)2000</div> </div>	<div> <div>Photoelectric Factor, Bottom,</div> <div>Real-Time, Computed Downhole (PEB_</div> <div>DH_ECO_RT)</div> <div>0 (----)10</div> </div>
<div> <div>Raw Formation Sigma, Average,</div> <div>Real-Time, Computed Downhole (RFSA_</div> <div>DH_ECO_RT)</div> <div>0 (CU)50</div> </div>		<div> <div>ARC Phase Shift Resistivity 40 inch at 2</div> <div>MHz, Real-Time (P40H_ECO_RT)</div> <div>0.2 (OHMM)2000</div> </div>	<div> <div>Bulk Density, Bottom, Real-Time,</div> <div>Computed Downhole (ROBB_DH_ECO_</div> <div>RT)</div> <div>1.85 (G/C3)2.85</div> </div>
<div> <div>Ultrasonic Caliper, Average Diameter,</div> <div>Real-Time, Computed Downhole</div> <div>(UCAV_DH_ECO_RT)</div> <div>6 (IN)16</div> </div>			<div> <div>Thermal Neutron Porosity, Average,</div> <div>Real-Time (TNPB_ECO_RT)</div> <div>45 (PU)-15</div> </div>